

February 2012



Schedule Subject to Change Due to Facility Rentals

SUN MON TUE WED THUR FRI SAT

			1	2	3 Shinny Cancelled	4
5 Public Skating Cancelled	6	7	8	9	10	11
12	13	14 Valentines Day	15	16 Adult Skate Cancelled	17	18
19 Public Skating Sponsored by South Dorchester optimist Club	20 Family Day Building open 5:00pm to 11:00pm 30+ Cancelled Shuffleboard Cancelled	21 Walking Cancelled Seniors Day Out	22 Ladies Shinny Cancelled Family Drop In	23 Indoor Walking Cancelled	24	25
26	27	28	29			

Tiny Tots: Tues. & Thurs. 10:30am—11:30am Cancelled February 16
 Mini Shinny: Wed. 11:00am—12:00pm
 Figure Skating Open Ice: Wed. & Thurs. 3:00pm—5:00pm
 Youth Day Camp— January 3, 4, 5, 20 8:00am -5:00pm
 Family Drop-In February 22 6:00pm to 8:00pm \$5/family of five
 Seniors Day Out— February 21 9:30am to 12:30pm. \$10 includes lunch

-  **Adult Skate: \$3**
Tuesday & Thursday
9:30am to 10:30am

-  **Indoor Walking: \$1**
Tuesday & Thursday
7:00am to 9:00am
Imperial Hall

-  **Shinny Hockey: \$5**
Tuesday & Friday
3:30pm to 5:00pm

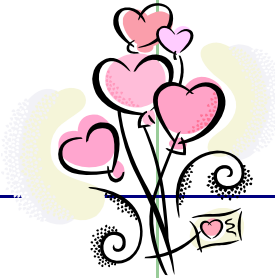
-  **Public Skating: Sundays**
\$2/student; \$3/adult; \$6/family
1:00pm to 2:30pm

-  **Shuffleboard & Carpet Bowling: \$3**
Monday & Wednesday
2:00pm to 4:00pm

-  **Familje Skating (Family Skate)**
Friedach Feebawoa 24
5:00pm to 6:00pm

-  **30+ Shinny— max 25 people**
Monday nights
9:00pm to 10:00pm
\$10/week in advance
\$15/week— night of

-  **Ladies Shinny— max 25 people**
Wednesday nights
9:30pm to 10:30pm
\$10/week in advance
\$15/week— night of





EAST ELGIN
Community Complex

531 TALBOT ST. WEST, AYLMEER, ON N5H 2T9
 PHONE: 519-773-5631
 FAX: 519-773-5755
 E-MAIL: tklachan@eastelgincommunitycomplex.ca

PLEASE ENSURE YOU BRING APPROPRIATE EQUIPMENT
 (IE: INDOOR WALKING SHOES, HOCKEY EQUIPMENT)